



Pump-n-Play Jr.

OWNER'S MANUAL

Serial No. _____



Table of Contents

Product Specifications.....	4
System Components.....	5
Required Tools.....	5
Installation.....	6
Winterize.....	8
Dewinterize.....	8

Appendix

Diagram A: Pump-n-Play Jr. Installation.....	10
Diagram B: Pump-n-Play Jr. Exploded View.....	11
Diagram C: Part Listing.....	12

Pump-n-Play Jr. Owner's Manual

Product Specifications

Description: The Pump-n-Play Jr. is a pump system designed for preschool-aged kids. The manually operated stainless steel pump simulates the action of a traditional water hand pump. However, no well is needed as it can be connected to a pressurized water line (like city water) which automatically refills the above-ground tank as water is pumped out of the tank.

Features

- Automatic tank refill
- Hand polished stainless steel finish
- Self-priming and no routine maintenance
- Tank Drain plug
- On/off water supply valve
- Tank and pump gaskets

Composition

- Hand pump body, handle, lift rod, and tank body are stainless steel
- Fasteners are stainless steel
- Gaskets, Cup Seals, O-rings are food-grade Buna rubber
- All other components are NSF approved Acetal or lead-free brass

Physical Characteristics

- Tank Height: 15"
- Tank Holding Capacity: Approximately 2.5 gallons
- Tank Weight (dry): 50 lbs.
- Inlet connection: ¾" NPT Female
- Tank Flange: 14" diameter with six (6) holes for 3/8" anchor bolts

Pump-n-Play Jr. System Components: (See Diagrams B & C)

- 1) One (1) Lil Guppy Playground Pump
- 2) One (1) Suction Pickup Tube
- 3) One (1) Tank
- 4) One (1) pre-installed Block Off Cover
- 5) Two (2) Gaskets
 - a. (5a) - Pump
 - b. (5b) - Tank
- 6) One (1) pre-adjusted Float Valve mounted in the tank
- 7) One (1) pre-installed 3/4" Female Inlet Ball Valve located at the base of the tank
- 8) One (1) Security Bolt Bit
- 9) Ten (10) Security Bolts
 - a. (4) Pump Security Bolts
 - b. (6) Tank Security Bolts
- 10) One (1) Special Tee Wrench
- 11) One (1) 1/2" NPT Port Drain Plug
- 12) One (1) 1/2" NPT Port Access Plug
- 13) One (1) Tank Flange

Required Tools:

One (1) pipe wrench, one (1) 9/16" wrench or socket, one (1) security bolt bit (Item 8) (provided), one (1) special tee wrench (Item 10) (provided), one (1) torque wrench with 9/16" Socket if available, one (1) hammer drill or rotary hammer with corresponding 3/8" bit (if using anchor bolts), one (1) steel hammer (if using anchor bolts), Tapcons® with matching sized bit (if using Tapcons®)

Note: Use safety glasses and gloves during the installation process.

Installation

Warning – You must comply with your local plumbing code. Contact a certified plumber if you have questions about proper plumbing codes in your area.

Before you begin the installation of your new pump, open the box and inspect the contents. Verify that you have received everything that you ordered. If there is anything that is missing or does not match, please contact us immediately to correct the situation at Sales@CadronCreekPlay.com.

Record your Pump Serial Number on the front page of this manual.

Location – Before deciding on the location of your pump, you should consider the physical limitations of this style of pump. The pump should be installed in a location that meets the vertical and horizontal pumping limitations of your pump. See **Diagram A** for more details.

Read the instructions completely before beginning the process.

Review **Diagram A before starting the installation process**

Step 1: Connecting to city water supply line

Add the following items to the incoming water supply line:

- 1) Shutoff valve (A)
- 2) Pressure reducing valve (B) (if you know the line pressure exceeds 60 PSI)
- 3) Backflow preventer valve (C) if required by your local or state regulations
- 4) Tee fitting and a connection for an air hose (D) in line, so the supply line can be expelled of water to prevent freezing.
- 5) The supply line (E) to the tank should not be smaller than ½" diameter from the supply valves to the outlet of the underside of the tank. From that point use a flexible line (F) such as a braided fountain supply line to connect to the ¾" NPT female inlet ball valve (G) that is attached to the bottom of the tank.

Step 2: Install Tank

- A) The tank should be installed on a sturdy platform at the desired location. There should be a 6" - 8" void in the center of the platform for the water line to run through under the tank. Do not connect the line at this point.
- B) Position the tank on the platform so that the spout will point in the desired direction. (**Reference **Diagram A & B****)

- C) Locate and mark the six (6) 3/8" clearance holes (H) at the tank's mounting flange.

For a concrete platform using Tapcons® or concrete anchor bolts:

- a. Place the tank aside and drill the holes. Be sure to drill at least as deep as your Tapcons® or anchor bolts are long and to clean each hole for dust and debris after drilling.
- b. Tilt or lift the tank up to attach the flex supply line to the inlet of the female ball valve and then position the tank at its desired position on the platform.
- c. With the tank mounting holes aligned with the drilled holes, install the Tapcons® using the matching sized bit or the anchor bolts using a steel hammer. **Be sure to attach the washer and nut onto the anchor bolt w/ roughly ½" of threads exposed on the top before hammering.**
- d. Hammer each anchor bolt until the washer is flush with the tank flange and then tighten the nut with a 9/16" wrench or socket to the recommended torque value of 20 ft.-lbs. (use a torque wrench if available) **DO NOT OVERTIGHTEN**

For a wooden platform with preinstalled lag bolts:

- a. Attach the flex supply line to the inlet of the female ball valve by tilting or lifting the tank up
- b. Align the tank mounting holes and place the tank on the platform so that the lag bolts go through the tank mounting holes
- c. Secure the tank to its base by tightening nuts onto each lag bolt.

Step 3: Filling the tank with water

- B) Turn on the city water supply line.
- C) Open the ¾" NPT Female Inlet Ball Valve (G) to allow the water to fill the tank
- a. Remove the lower ½" NPT Port Access Plug (I).
 - b. Insert the square end of the Tee Wrench (Item 10) through the hole where the plug was removed. Align the square end of the tool to the mating square hole in the adapter that is located on the handle of the ball valve. Open the valve by turning the Tee Wrench in a counterclockwise direction allowing water to fill the tank. The tank will be filled to about 3.5 gallons as a reserve for pumping.
 - c. Reinstall the ½" NPT Port Access Plug.

Step 4: Connecting the Lil Guppy Playground Pump to the tank

- A) Attach the Security Bolt Bit (Item 8) to a Speed Driver or a 1/4" Ratchet Driver. **Do Not use a Power Driver!**
- B) Remove the (4) Pump Security Bolts (Item 9) on the Tank's Block-Off Cover (Item 4) and set aside.
- C) To remove the Block-Off Cover lift straight up. If it sticks to the gasket try prying up on the cover by working around it with a dull flat blade screwdriver.
- D) Install the Pump's Pick-up Tube (Item 2) to the inlet of the pump by turning it Clockwise until it is hand tight. **Do Not Overtighten!**
- E) Insert the pump and its suction tube into the tank opening and align the pump's base to the bolt holes. (See Diagram B for Orientation) Be careful not to damage the float valve inside the tank with the suction tube.
- F) Evenly tighten the four (4) Pump Security bolts that you removed earlier from the Tank's Block Off Cover.

Step 5: Operation of Lil Guppy Playground Pump

Begin pumping the handle on the Lil Guppy pump. Water should begin to flow from the spout after 2-3 strokes.

Please refer to the Lil Guppy Playground Pump Owner's Manual for operation and maintenance information about the Lil Guppy Playground Pump.

Winterize the System

***** Failure to winterize may void the warranty. *****

- A) Shut off the water supply at the city supply valve
- B) Open the ½" NPT Port Drain Plug (Item 11) on the side of the tank to drain the water.
- C) If an air hose line connection was installed in the supply line, add compressed air at that point to blow water from the line. The water will be exhausted through the fill float valve in the tank, emptying the tank completely. **Do Not Exceed 60 PSI in the Line or the Valve with Compressed Air!**
- D) Open the ½" NPT Port Access Plug (Item 12), insert the Tee wrench (Item 10) and turn clockwise to close the ball valve.
- E) Reinstall the ½" NPT Port Drain Plug and Access Plug.
- F) Remove the 4 (four) Pump Security Bolts holding the pump to the tank. Remove the pump.
- G) To drain the water from the Pump, hold the pump at an angle and pump the handle until all the water is removed. Store in a safe warm place.
- H) Reinstall the Tank's Block-Off cover and the Security Bolts.

Dewinterize the System

- A) Remove the Tank's Block-Off cover and the Security Bolts
- B) Reinstall the pump onto the tank using the removed security bolts
- C) Open the ½" NPT Port Access Plug, insert the Tee wrench and turn counterclockwise to open the ball valve.
- D) Reinstall the ½" NPT Port Access Plug
- E) Turn on the water supply at the city supply valve

Contact

Please read and understand all instructions. If help is needed or you have questions regarding your product, you can email technical support at sales@CadronCreekPlay.com or call our toll-free number **1-888-403-7867**.

Appendix

DIAGRAM A: Pump-n-Play Jr. Installation

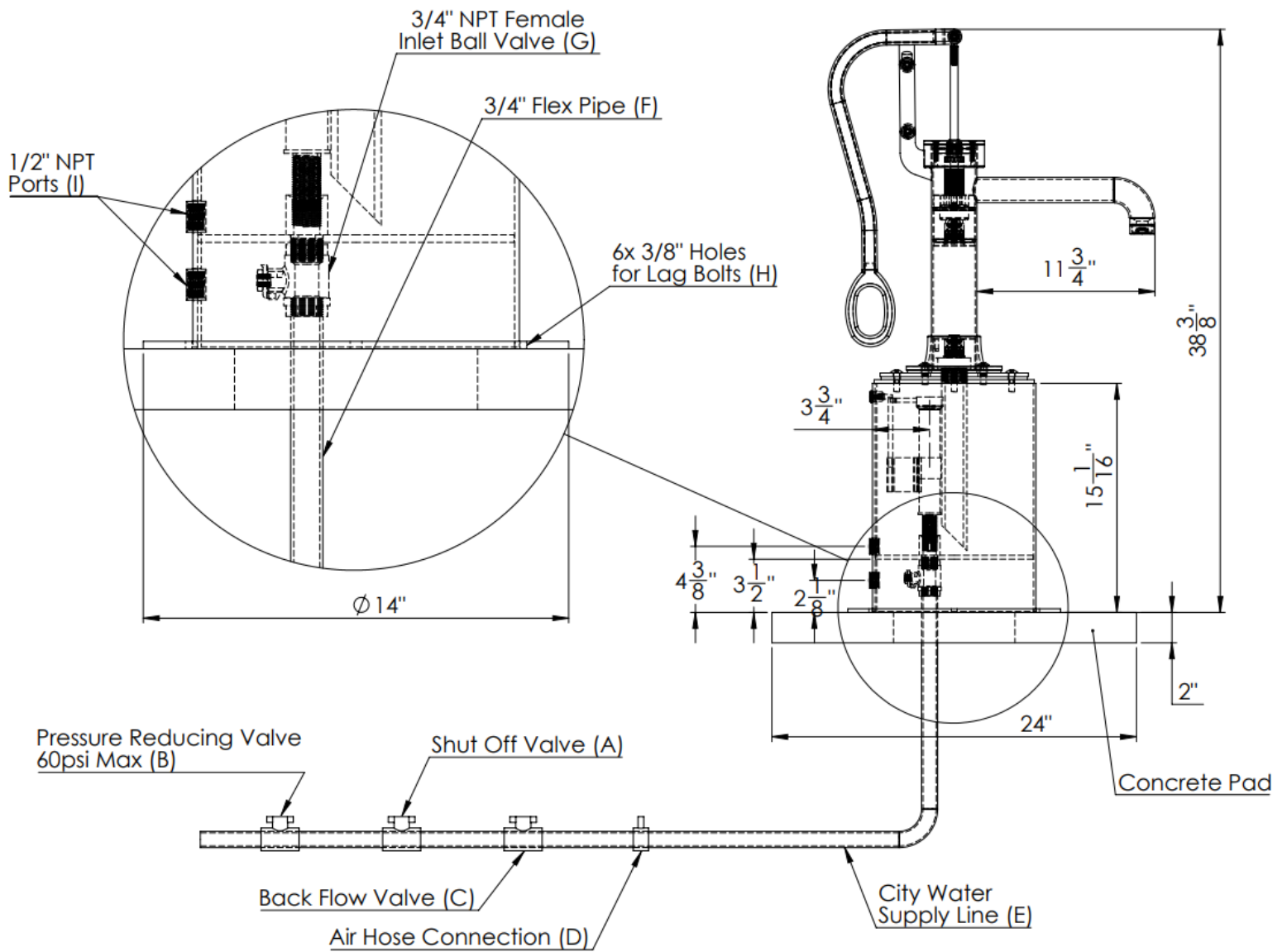


DIAGRAM B: Pump-n-Play Jr. Exploded View

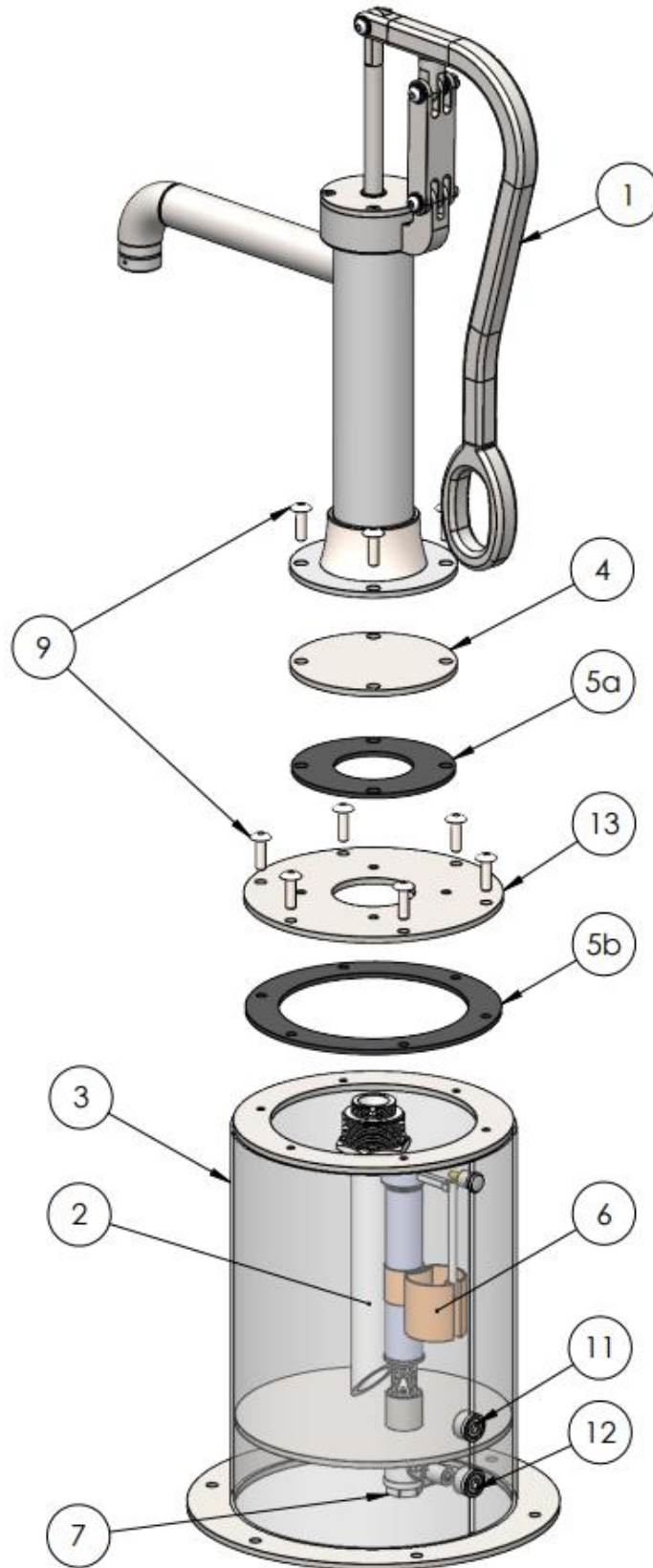


Diagram C: Part Listing

Item No.	Part Number	Description	Quantity
1	60-002-0-00-00	Lil Guppy Playground Pump	1
2	65-006-0-10-17	Suction Pickup Tube	1
3	65-006-0-10-02	Tank	1
4	65-005-0-10-07	Block Off Cover	1
5a	65-005-0-10-14	Pump Gasket	1
5b	65-005-0-10-13	Tank Gasket	1
6	65-005-0-10-10	Float Valve	1
7	65-005-0-10-12	Inlet Ball Valve	1
8	04-000-1-45-20	Security Bolt Bit	1
9	04-000-1-45-19	Security Bolts	10
10	65-005-0-13-01	Tee Wrench	1
11	65-005-0-10-11	½" NPT Port Drain Plug	1
12	65-005-0-10-11	½" NPT Port Access Plug	1
13	65-005-0-10-05	Tank Top Plate	1